



D'STUDIO IS A SISTER CONCERN OF EMKAY ENTERPRISES LTD



IN THE LOVING MEMORY OF
LATE MR. MASIH UL KARIM (Chairman) & LATE MRS. NAZLI KARIM (Director)

*Though you are not present with us
but your ideals and teachings
are deeply engraved in our hearts.
Hope, you stay blessed in heaven dear mentors & guardians*





*“Architecture should speak of its time and place,
but yearn for timelessness.”*

– Frank Gehry



D'STUDIO is a sister concern of Emkay Enterprises Limited
EMKAY is a leading Engineering Firm with over 500 successful projects
all over the country. It was established in 2003

D'STUDIO started its journey on 2013 focusing on
ARCHITECTURE, INTERIOR, LANDSCAPING AND CONSTRUCTION

Throughout time many projects were put together successfully that was
recognised locally and internationally
Our main aim is to build sustainable, cost effective
and aesthetically pleasing spaces

EMKAY SERVICES



FIRE SAFETY



ELECTRO-MECHANICAL



STRUCTURAL



SECURITY & SURVEILLANCE



INDUSTRIAL CODING



CONSTRUCTION

D'STUDIO SERVICES



ARCHITECTURE



INTERIOR



FURNITURE DESIGN



3D & ANIMATION



HOME AUTOMATION

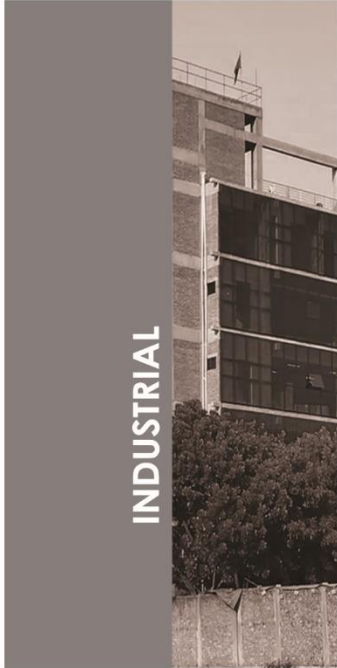


LANDSCAPE

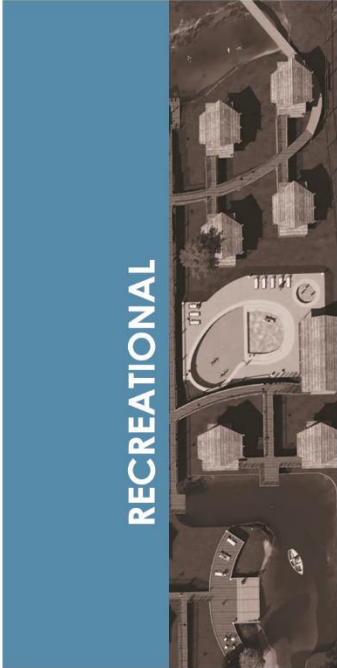
ARCHITECTURAL PROJECTS



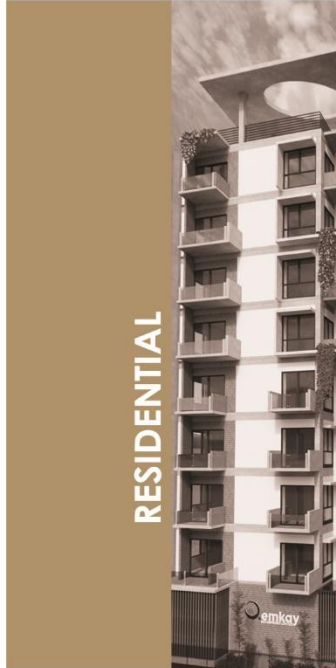
10-15



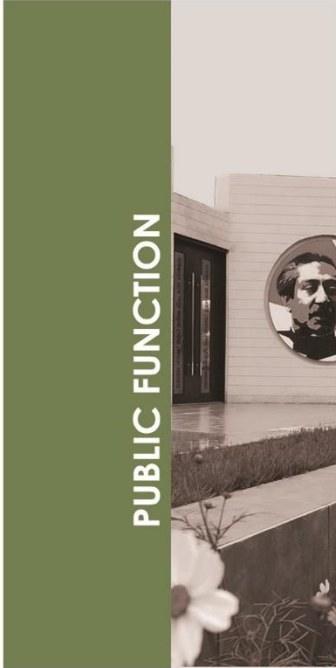
16-19



20-25



26-29



30-37

INTERIOR PROJECTS



40-49



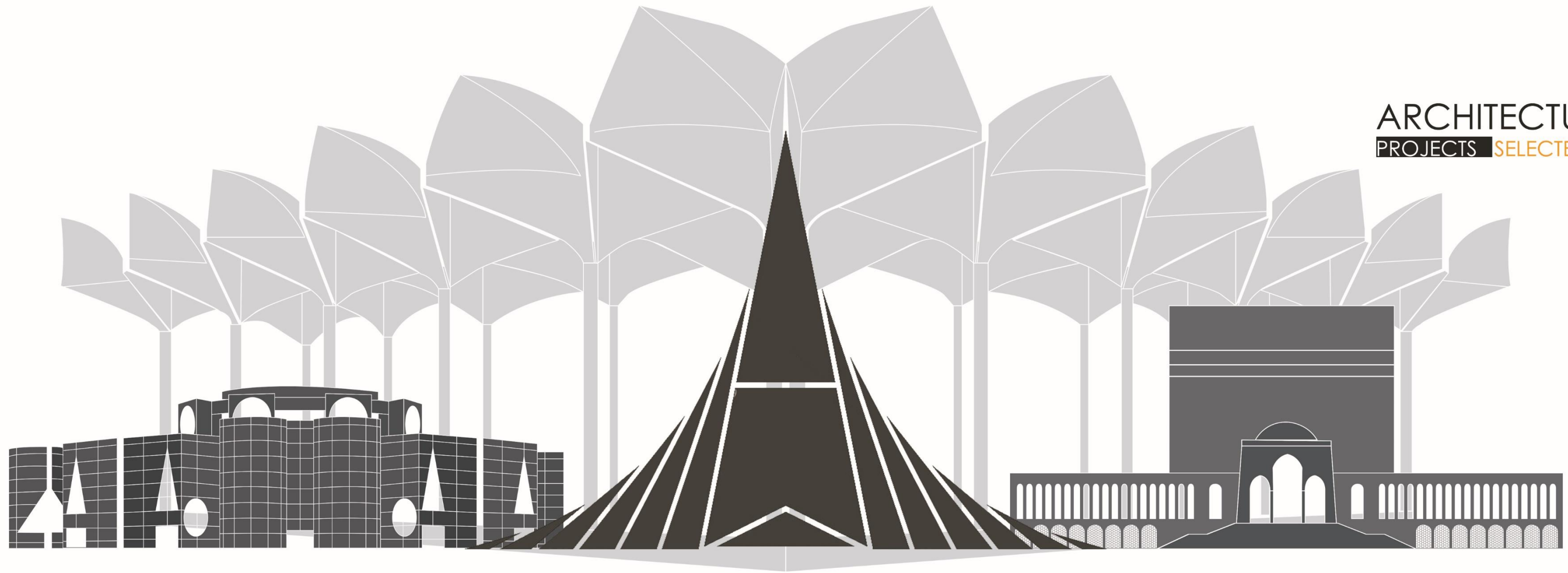
50-55



56-63



64-67



ARCHITECTURAL
PROJECTS **SELECTED**

CHRISTIAN COOPERATIVE CREDIT UNION LTD

ARCHITECTURE | COMMERCIAL | TEJGAON

Land: 9.05 katha | B+G+9 | Built Area: 53,800 sft

Is a corporate building situated in the densed area of Tejgaon, Dhaka. The project was won through a design competition. The Aim was to create an iconic design with significance in design hierarchy. We solved the functions and the functional requirements with all the modern facilities.



Low Energy Consumption



Sustainable Infrastructure



Vertical Green



Natural Ventilation



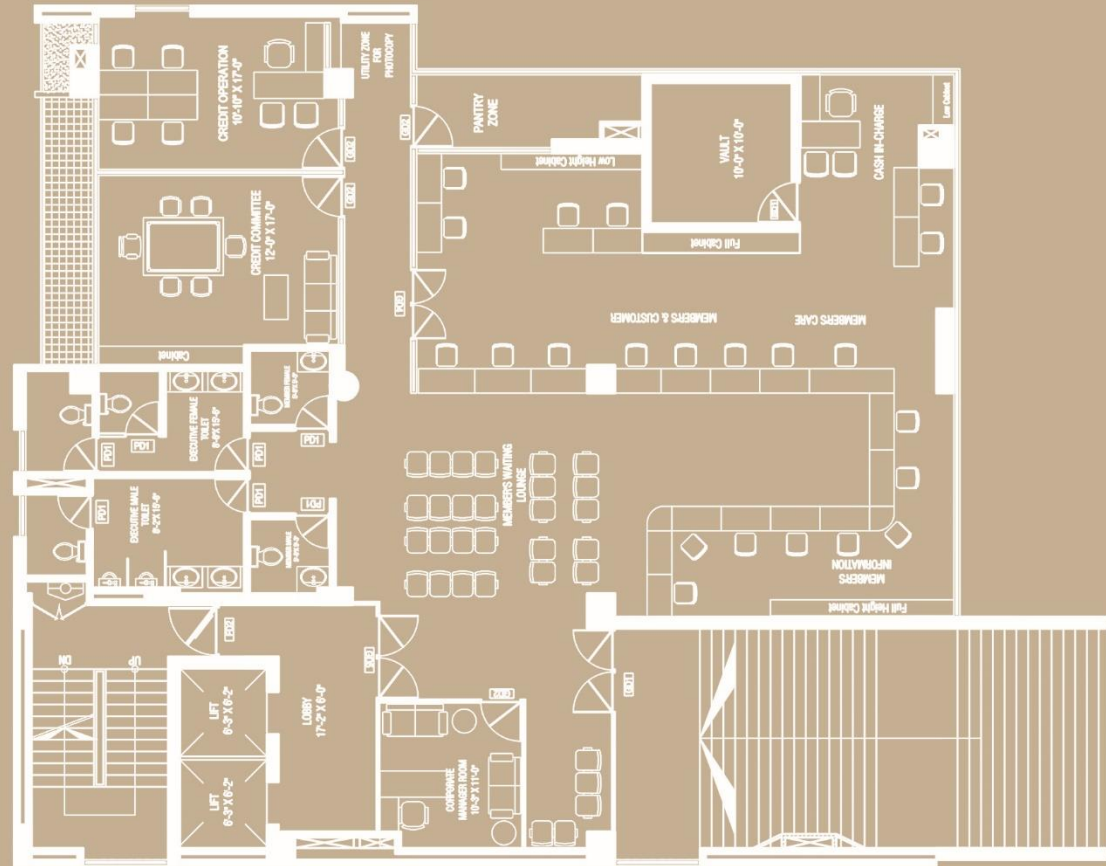
01

ARCHITECTURE
COMMERCIAL

CHRISTIAN COOPERATIVE CREDIT UNION LTD

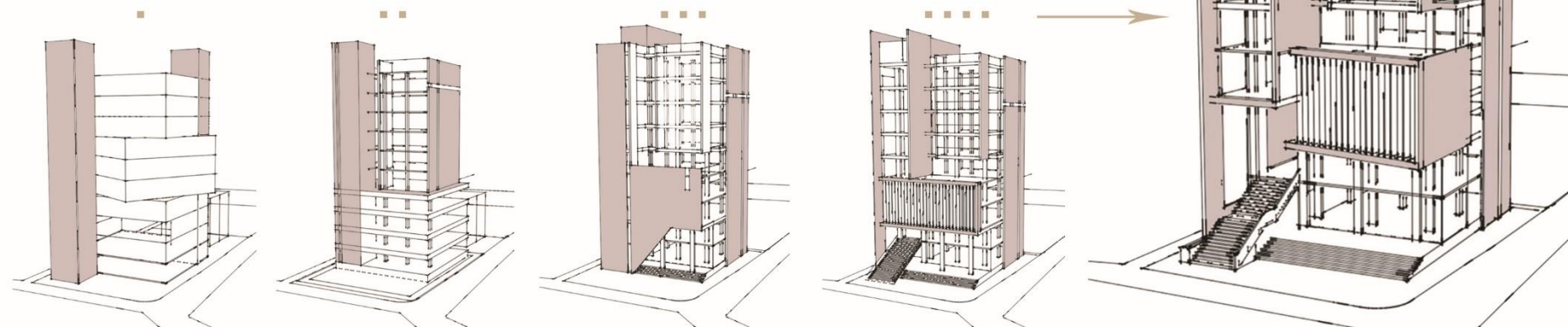
ARCHITECTURE | COMMERCIAL | TEJGAON

Land: 9.05 katha | B+G+9 | Built Area: 53,800 sft



1ST FLOOR PLAN | FLOOR AREA: 4050 sft

Design shouldn't be used to exploit the environment. It should be used to make the world a better place. Sustainability is the only option. The alternative is destroying the world.



UNIMED UNIHEALTH (GENERAL MEDICINE)

ARCHITECTURE | COMMERCIAL | GAZIPUR

Land: 32 katha | G+9 | Built Area: 102,900 sft

Is a Pharmaceutical building Situated in Mirzapur, Gazipur. This building is designed for General Medicine which will contain 3 production floors. It is originally a 9 storied building containing 3 clusters consisted of Production, Maintenance and Utility floors. Our core idea was to give this infrastructure a commercial look with bold design approach and materials.



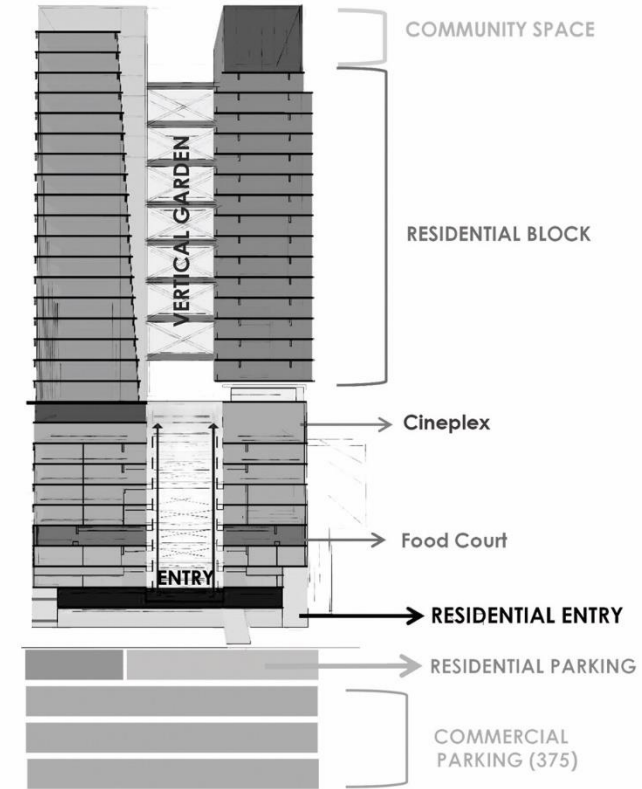
02

ARCHITECTURE
COMMERCIAL

ELITE HEIGHTS

ARCHITECTURE | COMMERCIAL | CHATTOGRAM

Land: 44 katha | 4B+G+28 | Built Area: 600,000 sft



Is a Iconic corporate High-rise situated in CDA Avenue of Chattogram. This Project is a mixed used building which is divided into 60% commercial space and 40% residential space. A unique and bold vertical green patch was introduced to make this structure more lively and environment friendly.



03

ARCHITECTURE
COMMERCIAL

SAADATIA SWEATERS LTD

ARCHITECTURE | INDUSTRIAL | SAVAR

Land: 5 Bigha | B+G+5 | Built Area: 192,000 sff

Is a Factory building campus with full amenities Situated in the industrial area of Savar. This is a completed project maintaining all the necessary standards and approval like Accord, RSC etc. All functional requirements and facilities were provided with modernity. It had a structural innovation with a live load capacity of 125 PSF





ACCORD
on Fire and Building Safety in Bangladesh

RSC IRMG
SUSTAINABILITY
COUNCIL



GREEN SMART SHIRT LTD

ENGINEERING SERVICES | INDUSTRIAL | GAZIPUR

Land: 19.7 Bigha | B+G+2 | Built Footprint: 53,820 sft

Is an Industrial building Campus Situated in the Maona area of Gazipur with massive footprint. Project role was to provide all the necessary Engineering Consultancy and FIRE safety product installation. This is a LEED Gold Certified factory with RSC Approval. Sustainability and Green building design was the core aspect of the design which reflected through building materials and greenery. We Provided adequate expertise to compliment with Architectural design value.

05

ARCHITECTURE
INDUSTRIAL

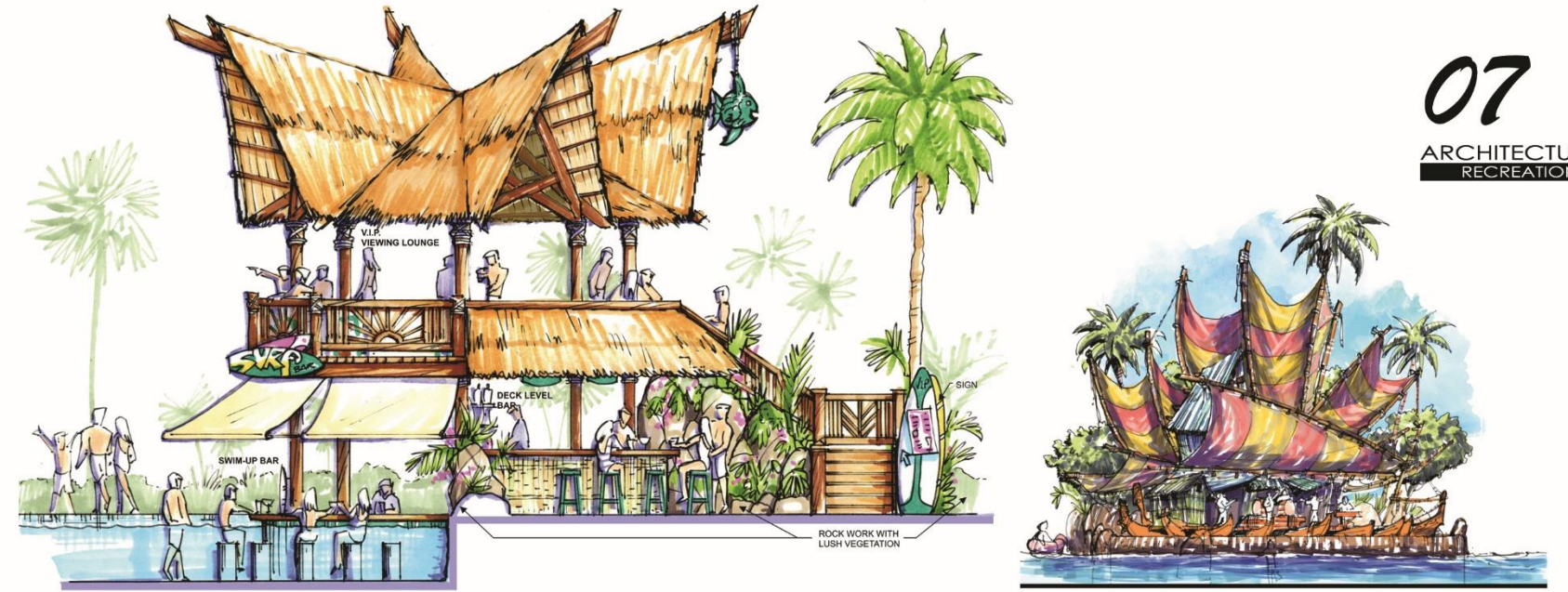


MANA BAY WATER PARK

ARCHITECTURE | RECREATIONAL | MUNSHIGONJ

Land: 150 Bigha | Built Area: 124,238 sqm

Is the largest water park situated in the secluded place in bausia, Munshigonj. The project was to play the role of local consultant. The Aim was to provide local structural solution along with designing functional buildings like dormitory, Utility building, Parking and road network etc. The most important role was to play the role of coordinator between the client, contractor and International consultants.



07
ARCHITECTURE
RECREATIONAL

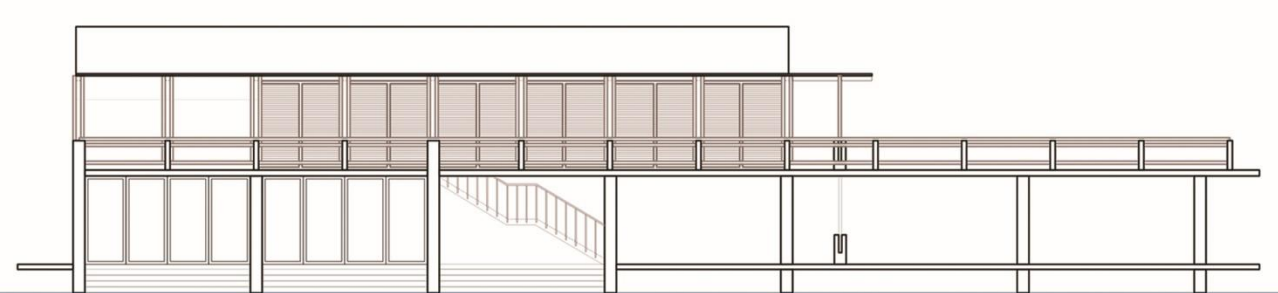
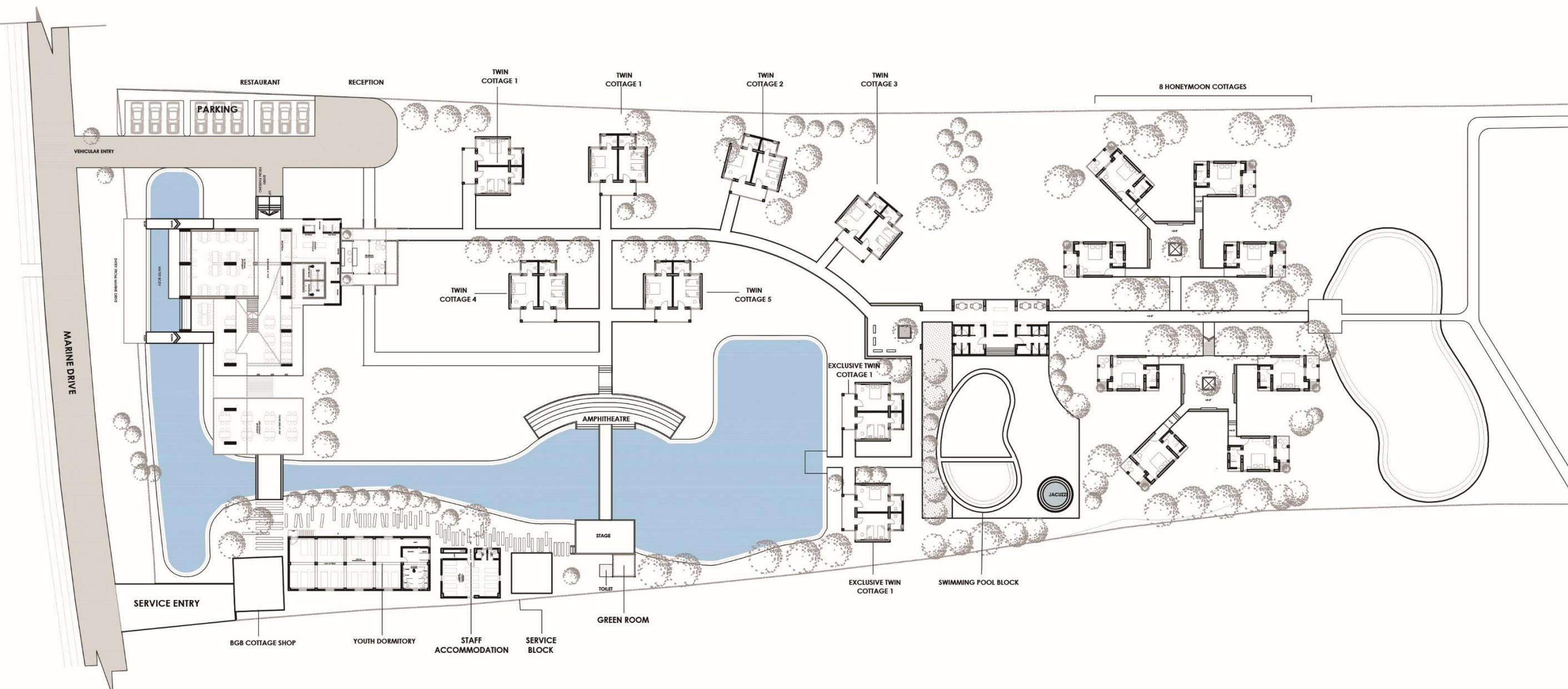


SHIMANTO RESORT

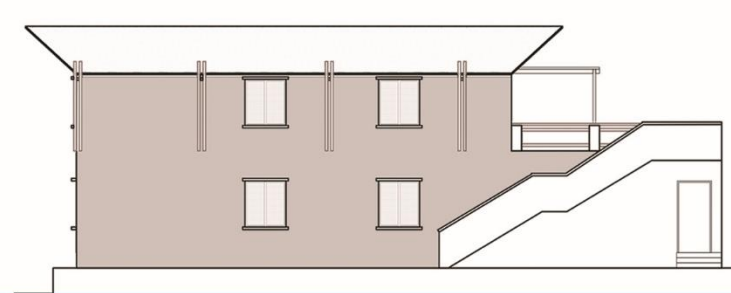
ARCHITECTURE | RECREATIONAL | COX'S BAZAR

Land: 11.7 Bigha | Built Footprint: 67,000 sft

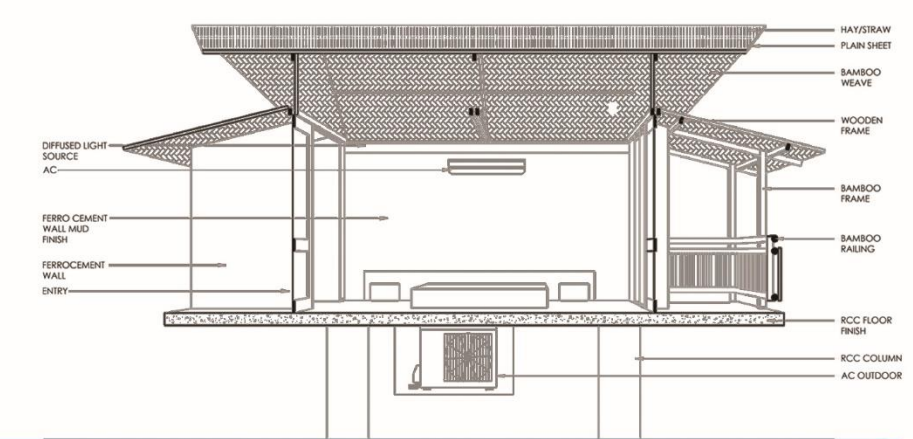
Is a hotel and Resort Situated in the Marine drive, beside Inani beach of Cox's Bazar. It was owned by the BGB (border Guard Bangladesh).The project was designed in a unique collaborative manner considering its business and operation strategy. We executed the design avoiding landfilling and met the requirements with all the necessary amenities reducing construction and maintenance cost.



Restaurant Block



Admin Building



Cottage Unit



06

ARCHITECTURE
RECREATIONAL

SHIMANTO RESORT

Land: 11.7 Bigha |
Built Footprint: 67,000 sft



D' HOUSE.

ARCHITECTURE | RESIDENTIAL | NARSINGDI

Land: 2 Bigha | Duplex | Built Area: 14,500 sff

This is a luxury vacation house situated in the edge of Dhaka at Ghorashal. The project is very personalized with complete amenities which also includes swimming pool, outdoor BBQ and beautiful landscape design with ample greenery. We incorporated client need and functional requirements with proper touch of Contemporary design aspect.



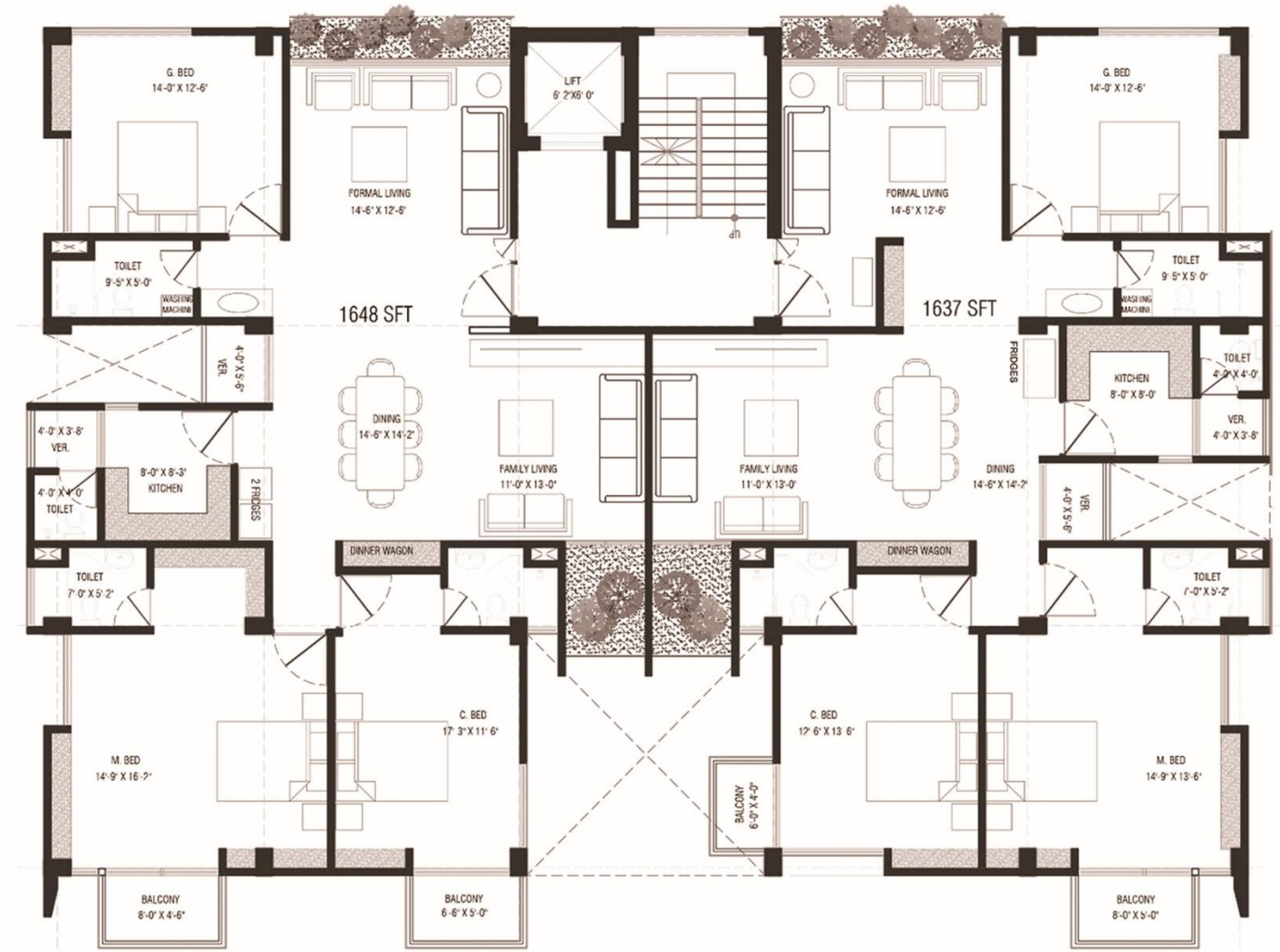


AFTABNAGAR RESIDECNE

ARCHITECTURE | RESIDENTIAL | DHAKA

Land: 9 Katha | G+8 | Built Area: 35,000 sft

Is a Residential building Situated in the Housing area of Aftab Nagar, Dhaka. The Aim was to create an Ideally functional yet aesthetically Iconic design with significance in Local material and greenery. We integrated the functions and the requirements of client with all the modern facilities ensuring contextual design approach.



MUJIB PRANGON

ARCHITECTURE + INTERIOR | PUBLIC | GAZIPUR

Land: 2 Katha | Single Storied | Built Area: 1,400 sft

Is a Memorial Building Situated in the Ansar VDP academy at Gazipur. The project was won through a design competition. The Aim was to create an iconic design with significance in Symbolism and History. We Proposed the Architectural, Structural and Interior Design complying the requirements of the project and approached with modern style blended with Monumentality.



10

ARCHITECTURE
PUBLIC FUNCTION



TETULTOLA SQUARE

ARCHITECTURE | PUBLIC | FARIDPUR

Land: 10 Katha | G+2.5 | Built Area: 17870 sft

Is a Market Complex (public function) Situated at tetultola, Faridpur Shadar. The project idea was to provide a typical shopping area with modern aesthetics and openness. We proposed this architecture to be built with brick jali pattern, exposed brick, concrete structure and metal roofing. This will showcase Local style & Construction process with achieving low-cost and earthy infrastructure.



TETULTOLA SQUARE

ARCHITECTURE | PUBLIC | FARIDPUR

Land: 10 Katha | G+2.5 | Built Area: 17,870 sft

11

ARCHITECTURE
PUBLIC FUNCTION

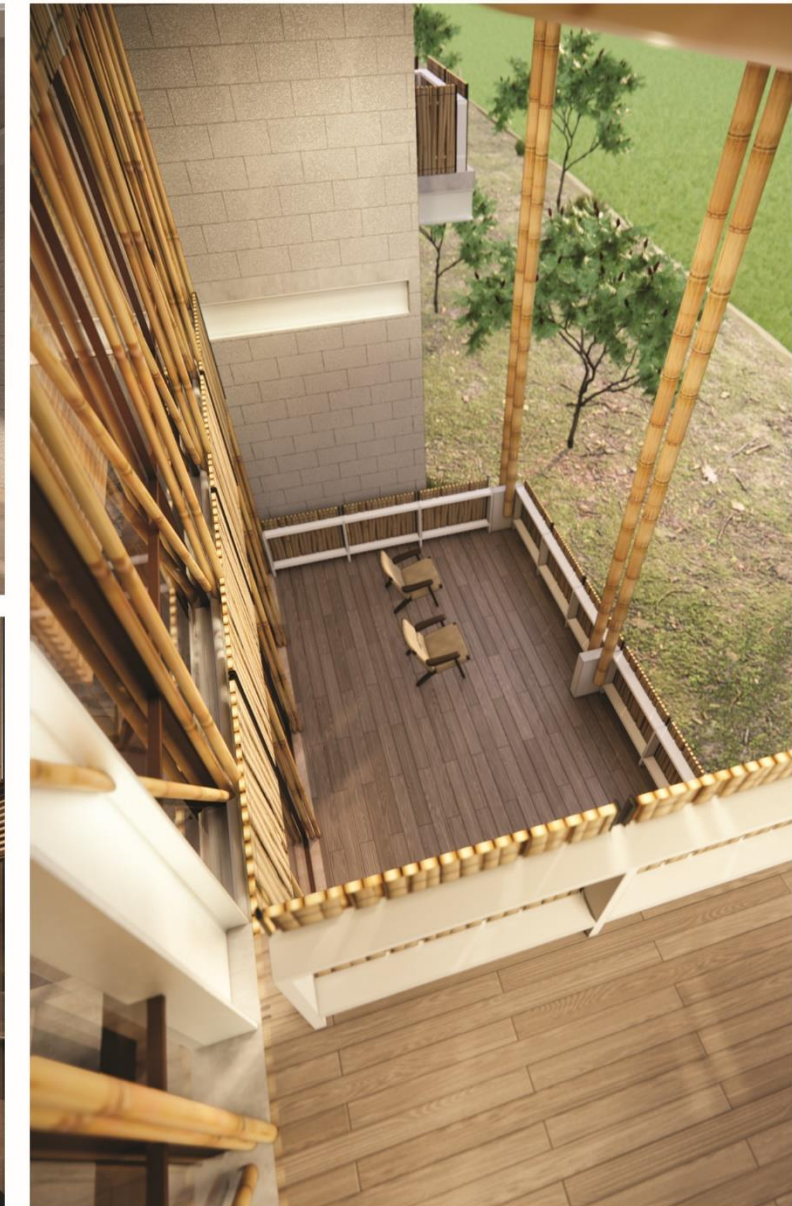


REMA-KALENGA VULTURE RESEARCH CENTER

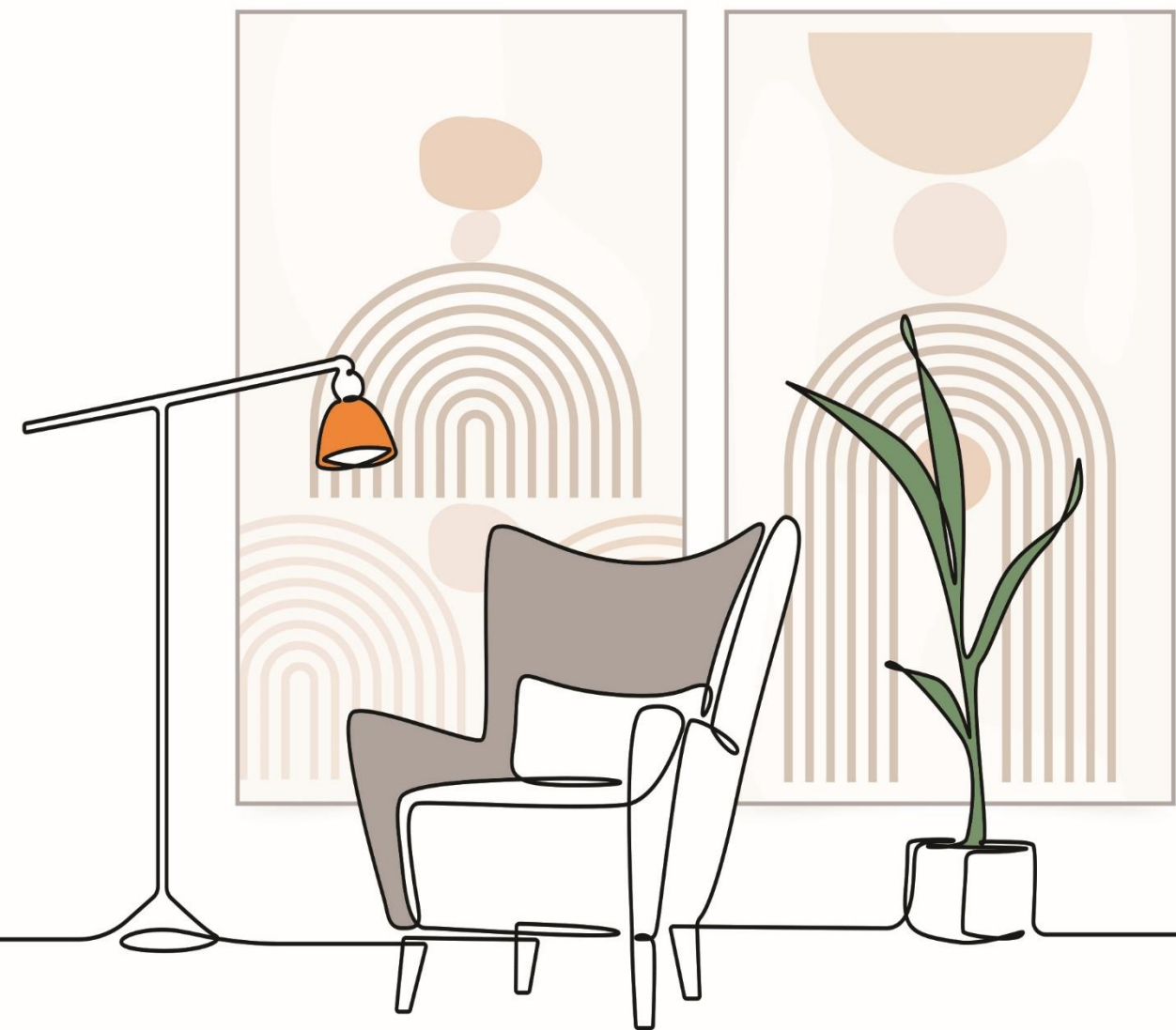
ARCHITECTURE | PUBLIC | SYLHET

Land: 5.4 Katha | Duplex | Built Area: 4,950 sft

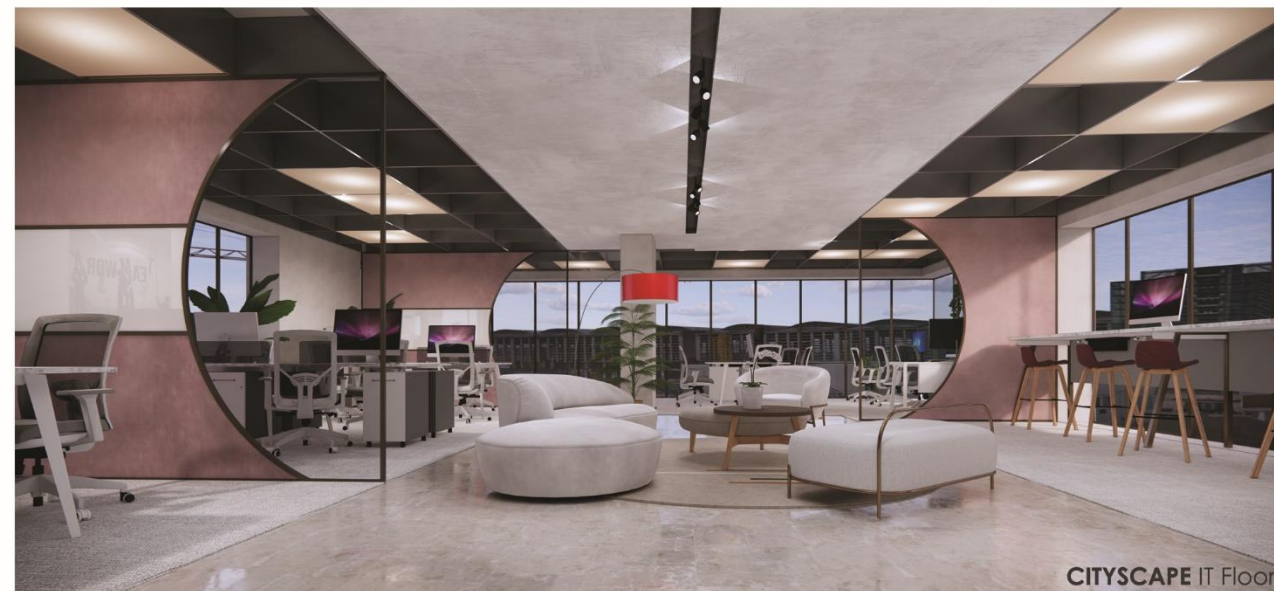
Is a research center for Vultures situated in Rema-Kalenga area of Shylet. First priority of this project was to blend with the locality and represent vernacular design with sustainable construction method. Our goal was to create a Subliminal design with Participatory design approach which included design workshops with local people, carpenters, masons, client and designers to achieve the perfect solution. The functional requirements were met including Platforms at various levels to watch bird and to create design hierarchy.



INTERIOR
PROJECTS **SELECTED**



OFFICES

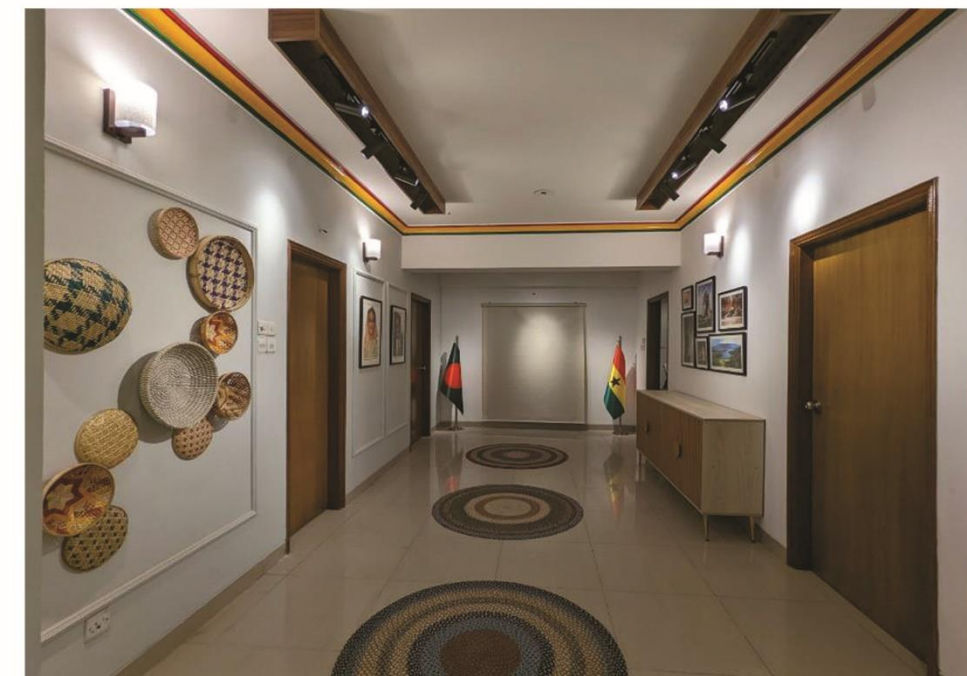


GHANA CONSULATE OFFICE

INTERIOR | OFFICE | DHAKA

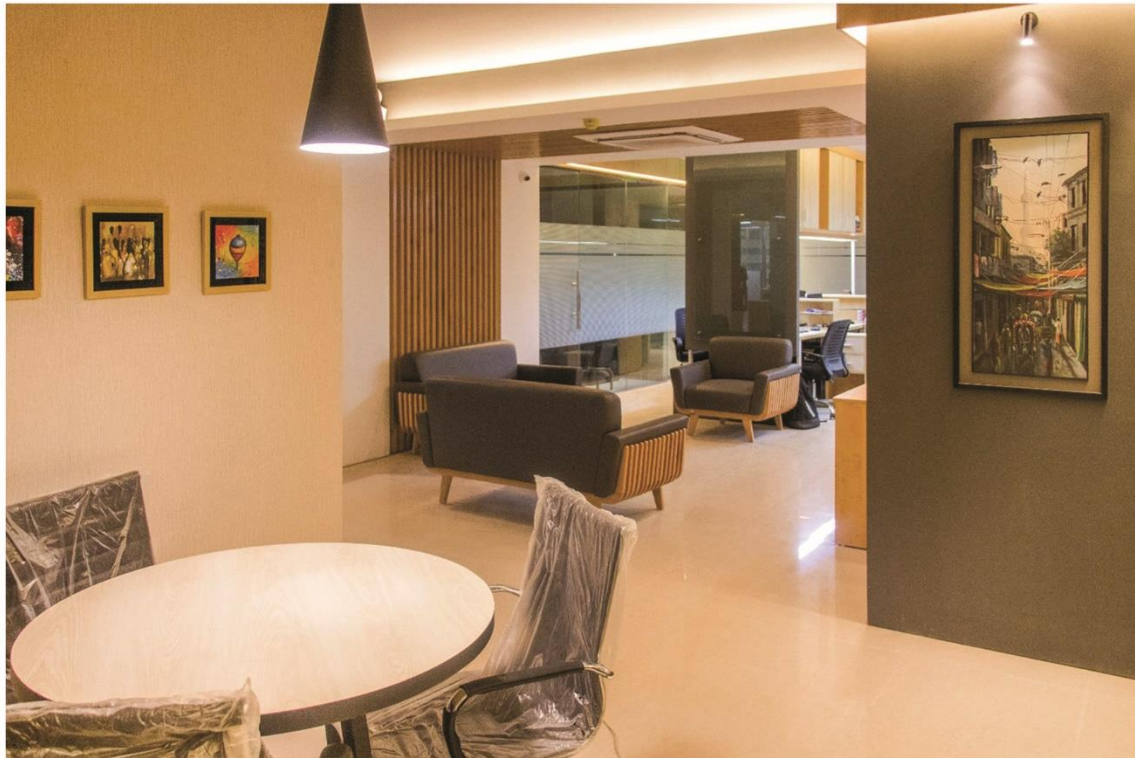
Baridhara | Single Floor | Built Area: 1,175 sft

Is a corporate office for Honorary Consulate of Ghana, situated in Baridhara, Dhaka. The project was to design the consulate office with representing culture of Ghana. The idea was to create integrated design of Bangladeshi and Ghanaian Style. Functional requirements are solved with all the facilities required in a modern day office.



01

INTERIOR
OFFICE



MEGHNA INSURANCE COMPANY LTD

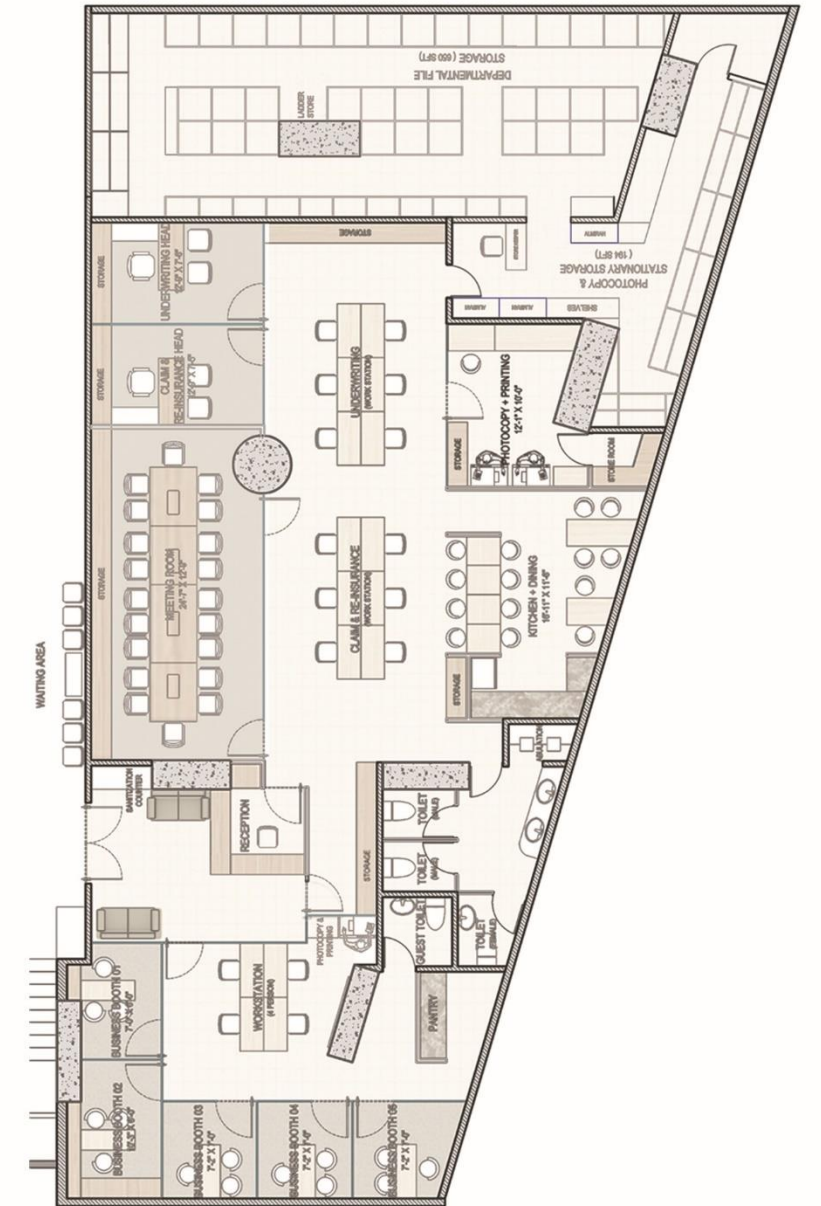
INTERIOR | OFFICE | DHAKA

Purana Paltan | Single Floor | Built Area: 10,000 sft

Is a corporate office situated in the Pritom Zaman Tower at Paltan, Dhaka.

The project was to design the Head office with ample storage. The idea was to create integrated design with significance in openness but ensuring privacy.

Modern aesthetics and facilities were introduced keeping the desired Functionality.



02

INTERIOR
OFFICE

EMKAY CORPORATE OFFICE

INTERIOR | OFFICE | DHAKA

Baridhara | 4 Floors | Built Area: 6,250 sft

Is the Corporate head office of Emkay Enterprises Ltd situated at Bridhara, Dhaka. It is our own office also designed and constructed by ourselves. The work was executed considering personal taste, Functional requirements & Contemporary design style with harmony.





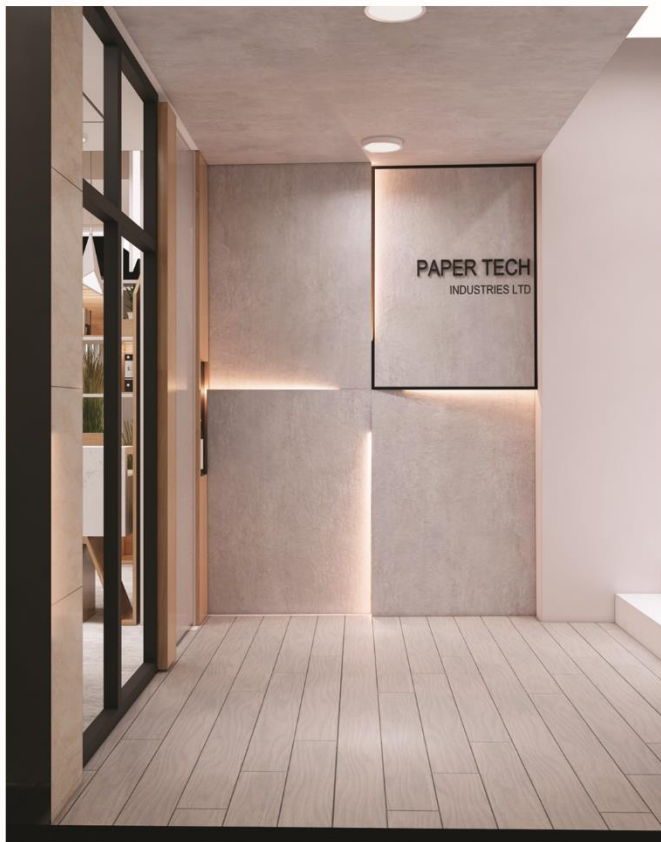
HOLIDAY INN CORPORATE OFFICE

INTERIOR | OFFICE | DHAKA

Tejgaon, Hatirjheel | Single Floor | Built Area: 3,400 sft

Is a corporate office for th executives of Mariyam Group for Hotel holiday Inn, Dhaka. The idea for this project was to design a decorative and luxurious office representing the aesthetics of the 5 star Hotel. Our Aim was to create functional spaces for office with grandness in space & merge modern, Italian and Victorian interior style.





PAPERTECH CORPORATE OFFICE

INTERIOR | OFFICE | DHAKA

Banani | Single Floor | Built Area: 4,000 sft

Is a corporate office Situated in the Rangs paramount at Banani, Dhaka. The project was to design the Head office for papertech industries Ltd with Open workstation concept but ensuring adequate storage. The goal was to create integrated design with significance in openness and reflection of paper and paper made products. We incorporated unique materials and decors to bring softness and flexibility of paper in the design with functionality to meet client requirements.



HOSPITAL

DIVINE MERCY HOSPITAL LTD - Gazipur

HI-TECH SPECIALIZED HOSPITAL PLC - Rajshahi

BANGLADESH EYE HOSPITAL - Dhaka

DR. ANISUZZAMAN HOSPITAL - Jessore



06

INTERIOR
HOSPITAL

DIVINE MERCY
HOSPITAL LTD

7 Floors |

Built Area: 210,600 sft

DIVINE MERCY HOSPITAL LTD.

INTERIOR | HOSPITAL | DHAKA

Kaligonj | 7 Floors | Built Area: 210,600 sft



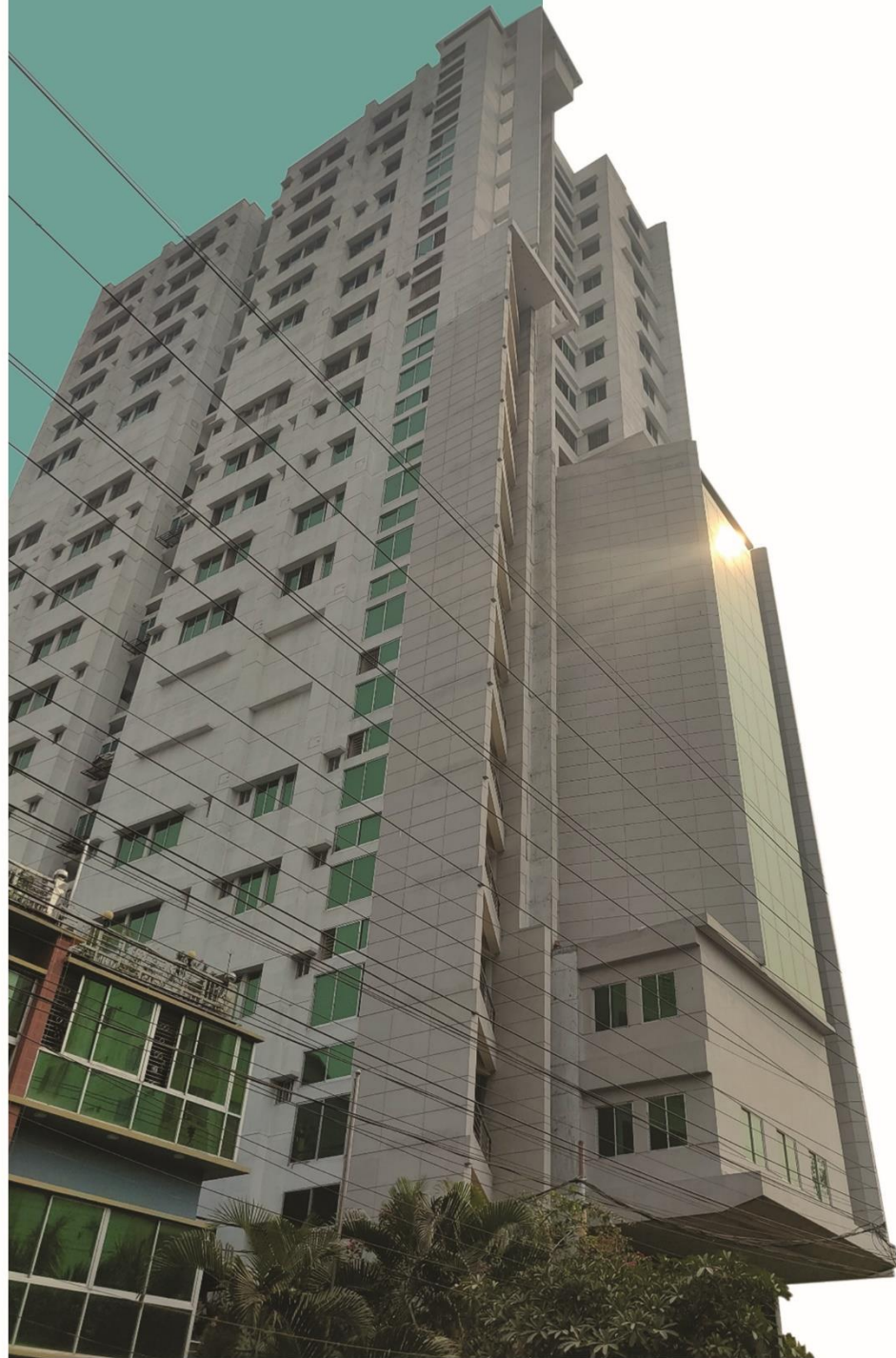
Is a Large scale Hospital interior situated in Ulukhola, Kaligonj, Gazipur. The project was also won through a design competition. The core concept was to create bold and eye pleasing design with minimum intervention considering low cost solution. We introduced pastel colors to mark and also decorate the spaces based on functions. This will make it more interesting, relaxing and easy to identify for general users along with modern aesthetics.



HI-TECH SPECIALIZED HOSPITAL PLC

INTERIOR | HOSPITAL | RAJSHAHI

Laxmipur | 20 Floors | Built Area: 146,300 sft



Is a High rise Hospital (interior) situated in Laxmipur mor, Rajshahi City. The role was not only to design and construct the interior but also to act as coordinator for the functional and service works related to hospital. Our concern was to create aesthetically pleasing, elegant & functional yet low cost & low maintenance design which will welcome everyone.

07
INTERIOR
HOSPITAL



RESIDENCE

PENTHOUSE OF DESHBONDHU GROUP

INTERIOR | RESIDENCE | DHAKA

Bashundhara R/A | Single Floor | Built Area: 2,480 sft

08

INTERIOR
RESIDENCE



DR. M. N. HUDA Residence



Is a Roof-top pent house situated in the Residential area of Bashundhara, Dhaka. The project was a cozy residence which we opened up towards the sky and roof to achieve open and grand interior. Function & spaces were designed in such a manner which connects the indoor and outdoor seamlessly when required. Architectural modifications was also done to meet the desired outlook



SIM GROUP Duplex Residence



UTTARA SECTOR 7 Residence





DUPLEX RESIDENCE OF K- SPORTS

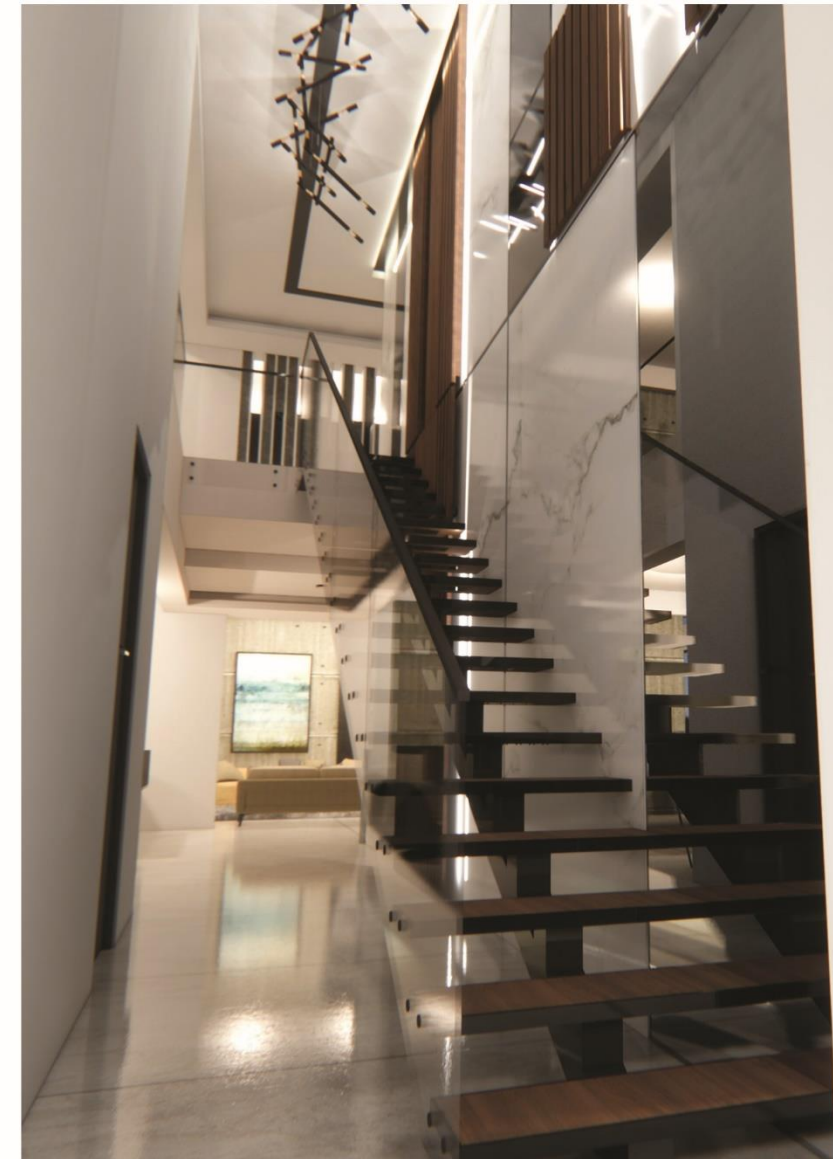
INTERIOR | OFFICE | DHAKA

Gulshan 2 | Duplex | Built Area: 6,500 sft

Is a Duplex Residence Situated at Charubithi in Gulshan 2, Dhaka. It was a luxurious residence with lot of open spaces. The Aim was to create a lavish personalized design with significance in openness and contemporary design style with a slight Moroccan touch in decoration. Each and every corner of the house is delicately designed and most furnitures are customized.

09

INTERIOR
RESIDENCE



DUPLEX RESIDENCE AT BARIDHARA

INTERIOR | DUPLEX | DHAKA

Baridhara | Duplex | Built Area: 5,400 sft

10

INTERIOR
RESIDENCE





DUPLEX RESIDENCE AT BARIDHARA

INTERIOR | DUPLEX | DHAKA

Baridhara | Duplex | Built Area: 5,400 sft

Is a Duplex Residence situated at Baridhara residential zone, Dhaka. It is a luxurious residence which will also be used as corporate gathering, arrange meeting and recreational activities. This project is deliberately designed using dark tone and only focal lighting to create a gloomy yet luxurious appeal. we executed this design with bold intervention in layout.

10

INTERIOR
RESIDENCE





AADOR DAYCARE CENTER

INTERIOR | DAYCARE | DHAKA

11

INTERIOR
DAYCARE

Tejgaon | Single Floors | Built Area: 1,950 sft

Is a Daycare Center of AARONG
Situated in the area of Tejgaon Dhaka.
The project was won focused on child
development and schematic design
was done by BRAC IED. Our key role
was to provide practical expertise and
construct the whole project as visualized.
This project was executed in 3 months
including all furniture and finish products.



AADOR DAYCARE CENTER

INTERIOR | DAYCARE | DHAKA

Tejgaon | Single Floors | Built Area: 1,950 sft

11

INTERIOR
DAYCARE



CONTACT US



<http://dstudio.emkayenterprise.com/>



[/dstudio.emkay](#)



[/DStudiobyEmkay](#)



[/@EmkayEnterprisesLtd](#)



[/dstudiobyemkay](#)



[/company/dstudiobyemkay](#)



HEAD OFFICE:

Icon Heights (level 7), House 10, Road 08, Block 'J'
Baridhara, Dhaka

BRANCH REGIONAL OFFICE:

Jumaira Raisa, 15 Mehdibagh, Chittagong

CONTACT NUMBER:

+88 01766666131, +88 01766666132

+88 02 9847630

+88 02 9857395



D'STUDIO



<http://dstudio.emkayenterprise.com/>

ARCHITECTURE | INTERIOR | ENGINEERING | CONSTRUCTION